

# INTEC EDGE 850

## EDGE 850 printer is supplied with:

Rewinder and Unwinder, EDGE2Print File Management Software, Toner starter kit (cmyk), Drum set (cmyk), Fuser, Transfer Belt and Test Roll

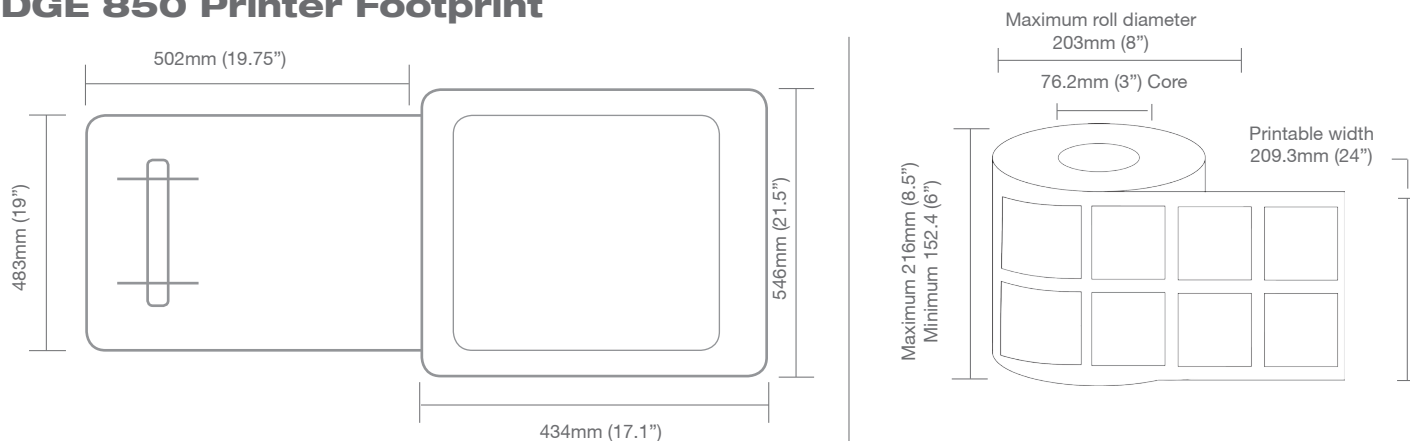
## System specification

PRINT SPEED	9.14 metres / mins (30ft/min)
PRINT TECHNOLOGY	Single Pass 4 Colour LED (CMYK)
PRINTER PROCESSOR	CPU: 533 MHz Memory: 512MB Hard Disk: 40GB Internal
MEDIA WIDTH	Maximum Roll Width 216mm (8.5") Minimum Roll Width: 152.4mm (6.0")
PRINT WIDTH	Maximum 209.3mm (8.24")
PRINT LENGTH	Up to 213.4m (700ft)
SUBSTRATE TYPES	Self-adhesive label stock. Die-cut label stock. Kiss-cut label stock. Non Die-Cut label stock. Tag stock. Approved films. Approved synthetics
PRINT QUALITY	1200 x 600dpi
TONER SUPPLIES	CMY - 11,500 pages at 5%. K - 11,000 pages at 5% (rated according to ISO/IEC 19798 guidelines) Printer ships with a set of starter toners
CONSUMABLES	Drums: CMYK - 30,000 pages at 5% (rated according to ISO/IEC 19798 guidelines) Fuser: 60,000 Transfer Belt: 60,000
FEEDER SYSTEM	Input roll maximum diameter: 203mm (8"). Core inside diameter: 76.2mm (3"). Maximum input roll weight: 6.35kg (14lbs) Cut on the fly, auto cut. Auto page width registration. Front panel LCD interface. Web management system torque. Auto adjusting from synchronisation
REWINDER SYSTEM	Output roll maximum diameter: 203mm (8"). Core inside diameter: 76.2mm (3"). Maximum input roll weight: 6.35kg (14lbs)
SOFTWARE	EDGE2Print
CUTTER	Rotary wheel for end of print-run cutting
DIMENSIONS (HxWxD)	Printer and Feeder: 660mm x 434mm x 546mm (26" x 17.1" x 21.5"). Rewinder: 406mm x 502mm x 483mm (16" x 19.75" x 19")
WEIGHT	Printer and Feeder: 49.9kg (110lbs). Rewinder: 12.54kg (27.65lbs)
OPERATING ENVIRONMENT	Temperature: 10 °C to 20 °C (50 - 89.6 °F). Humidity: 20% to 60% RH
POWER (TYPICAL)	220 - 240 VAC, 50/60 Hz at 1150W
CERTIFICATIONS	FCC Class A, CE, cTUVus, CCC
WARRANTY	12 months
SYSTEM REQUIREMENTS	CPU Intel Xeon E5-1650 @ 3.20GHz, or Intel Core i7-3930K @ 3.20GHz RAM 12GB RAM (minimum) HD 150GB SATA 10K or 15K RPM OS Windows 7 Professional or Ultimate 64-bit
OPTIONS	iVDP Variable data software LabelPro Slitters S100S and S200S LCF215 Label Finisher



Intec Printing Solutions Limited ensures superior quality and resolution, as well as greater consistency and repeatability for the Intec EDGE 850. The Intec EDGE 850 is designed and engineered to operate with approved qualified consumables and the Certified Media Library.

## EDGE 850 Printer Footprint



**intec**  
PRINTING SOLUTIONS

Intec Printing Solutions Limited  
Unit 11B, Dawkins Road Industrial Estate, Hamworthy, Poole, Dorset BH15 4JP  
Tel: +44 (0)1202 845 960 Fax: +44 (0)1202 845 961 [www.intecprinters.com](http://www.intecprinters.com)

# EDGE 850

Label printing solution



**intec**  
PRINTING SOLUTIONS



# INTEC EDGE 850

## Label printing solution

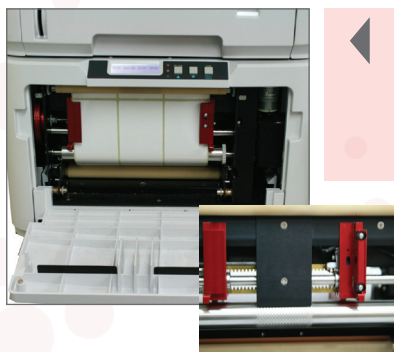
Compact enough to sit on a desktop, the Intec EDGE 850 with rewinder prints onto a vast array of die-cut, matrix removed and retained media as well as continuous roll substrates. A unique digital label solution that is ideal for short to medium production runs, printing up to 2,000 labels in less than 20 minutes. Supplied with easy to use EDGE2Print software offering drag and drop design layouts, imposition of PDF graphics and complete job costing. Adding iVDP (optional) for variable data printing will expand your print customisation offering.

### Print on a wide variety of media substrates

- Die-cut matrix removed
- Die-cut matrix retained
- Continuous roll stock
- Horticultural tag stock
- Non Die-Cut label stock
- Approved films
- Approved synthetics

### Applications include:

- Food and beverage packaging
- Cosmetics and personal care products
- Pharmaceutical and healthcare
- Logistics and transport
- Industrial chemical and special product labelling
- Horticultural tagging
- Multi-language print jobs and personalisation



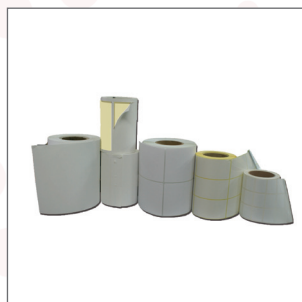
Built in reflective sensors enables the system to detect different substrates allowing you to print on to a wide variety of matrix removed labels of differing shapes and sizes and back marked stock.



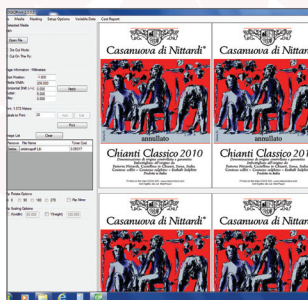
No more laminating or finishing required! Print straight onto polyester and synthetic based stocks for food and beverage, special requirement and Industrial chemical labeling.



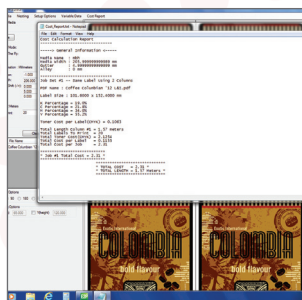
Having a small footprint and compact design ensures the EDGE 850 will easily fit in any busy production environment. Boasting a built in feeder and rewinder as well as cutterblade for end of job cutting, ensuring no need for additional equipment.



No need to spend time cutting labels post production. Simply use an approved die-cut matrix removed label stock. Matrix retained and continuous stocks can also be used.



Quickly and easily import PDF artwork into the supplied EDGE2Print workflow, automatically paginating your design to fit your roll width. EDGE2Print gives you complete control over your print job, allowing you to alter gutters, margins and run off.

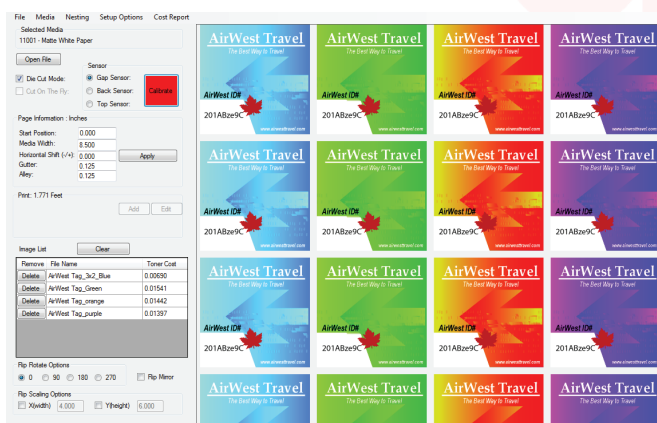


To understand the full cost of your label run simply generate a cost report using the integrated Job Costing Module. The module takes into account your toner and other consumables usage as well as label stock costs.

## EDGE2Print Software & Certified Media Library

The EDGE2Print label workflow package is a fully featured, easy-to-use software solution designed exclusively for use with the EDGE 850 on demand label printer. The drag and drop, snap to grid layout allows for quick imposition of PDF graphics and combined with quick changeover technology, makes lightwork of label production.

- User defined layouts and media management
- Conventional or die-cut media layout
- RIP rotation, scaling, mirror imaging and nesting capabilities
- Toner coverage and cost calculator per label and per job
- Multi-up costing for different graphics on the same layout
- Edge to edge printing on die-cut rolls
- Full colour management Harlequin® RIP
- Certified Media Library includes a wide variety of certified substrates



## GHS, BS5609 and IMDG Certification

The Globally Harmonized System of Classification of Labeling of Chemicals (GHS) is an international system created by the United Nations to ensure consistency for the labeling of dangerous goods.

British Marine Standard BS5609 is a requirement for self adhesive drum labels needing International Maritime Dangerous Goods (IMDG) certification for shipment. In order to meet the requirements for sections 1, 2 and 3 of the BS5609 standards, the labels are exposed to artificial weathering, tape removal and abrasion resistance tests to ensure they are capable of withstanding the harshest environments.

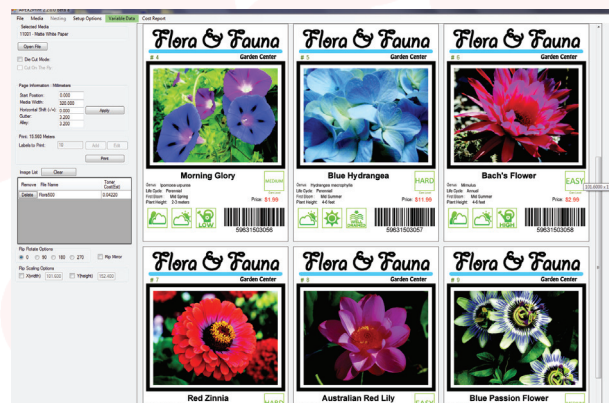
Two suitable label stocks have been approved for use with the LP215\*; a white matte PET (Polyethylene terephthalate) with a 3.4 mil layflat liner and a BOPP (Biaxially Oriented Polypropylene Film) 2.6 mil white using permanent acrylic adhesive, but a SCK liner.

Both products passed the rigorous testing regime carried out by PIRA (the Print Industry Research Association).

Die-cut labels printed on the LP215 deliver outstanding stability and resistance to water, chemicals, fading and smudges and still remain identifiable for at least 3 months after being immersed in the sea.

\* GHS approved materials from MACtac must be used to be compliant.

## iVDP\* Variable Data Printing



iVDP will allow users to expand their print capabilities and further meet customers needs for mass customisation in their design and message. The built in Pantone™ library and colour management tools allow for clean and crisp high resolution graphics and eliminates the need to pre-print labels. Users will be able to increase productivity, reduce inventories and decrease lengthy lead times by incorporating variable data printing into their workflow.

- Easy to use WYSIWYG design interface
- Over 4,000 pre-formatted barcodes
- Numerous graphic formats
- Horizontal and vertical sequential layout
- CSV file and data importing

\* optional module not supplied with printer



**GHS**  
The Globally Harmonized System  
of Classification and Labeling of Chemicals

